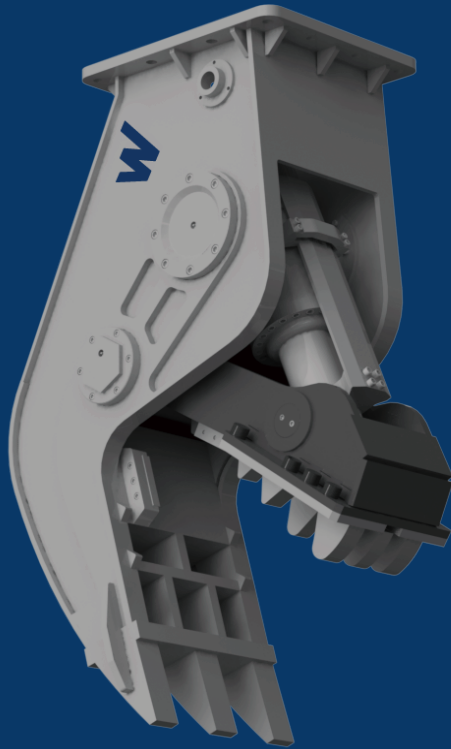


# SECONDARY PULVERIZERS



## HIGH QUALITY MATERIAL

-built with high quality steel for maximum strength and abrasion resistance.

## SPEED VALVE

-improves cycle time by up to 30% compared to standard hydraulic system.

## EXCHANGEABLE TOOTH PLATE

-eliminates the need to build up and hardface and are fast and easy to change in the field.



## LARGE-BORE CYLINDER

-the single large diameter cylinder with speed valve provides exceptional cutting and crushing force.



SPEED VALVE



HARDOX WEAR PLATE

## SPECIFICATIONS

Model	Unit	TP05V	TP10V	TP15V	TP20V	TP25V	TP30V	TP45V
Carrier Weight	ton	2 - 5	7 - 12	10 - 18	17 - 22	20 - 25	24 - 35	35 - 50
Operating Weight	kg	250	600	1,100	1,600	2,150	2,600	3,800
Height	mm	1,020	1,380	1,650	1,830	1,960	2,450	2,600
Width		260	355	436	520	540	600	830
Jaw Opening		440	700	790	850	935	1,100	1,300
Jaw Depth	mm	395	680	820	825	870	1,050	1,150
Blade Length	mm	75	102	140	150	200	200	250
Cutting Force at Blade	ton	37	87	163	222	258	293	354
Crushing Force at Tip	ton	11	21	42	54	62	92	117
Max. Oil Pressure	bar	220	270	300	320	320	320	320
Oil Flow Rate	lpm	30-75	80-120	100-180	180-220	210-240	220-320	280-450
Jaw Open / Close	sec.	1.3/1.3	2.0/2.6	2.5/2.0	2.2/2.5	2.7/2.3	2.9/2.7	3.0/3.1

Specifications are subject to change without notice

