

# EXCAVATOR ATTACHMENTS FOR DEMOLITION & RECYCLING



<b>TC</b>	<b>Primary Crushers</b>
<b>TP</b>	<b>Secondary Pulverizers</b>
<b>TP-RV</b>	<b>Rotating Pulverizers</b>
<b>MP</b>	<b>Multi Processors</b>
<b>TRS</b>	<b>Rail Cutters</b>
<b>TC</b>	<b>Mini Crusher</b>

## ABOUT US

WORLD ES is the company founded by experts of the recycling & demolition sector specialized in manufacturing industrial demolition & recycling equipment and tools. We have developed and manufactured high quality attachments to make customer's daily demolition and recycling jobs a lot easier since 2005.



## PRODUCT LINE UP

Our major product line includes primary crushers, secondary pulverizers, rotating pulverizers and shears for metal.



## THE QUALITY

WORLD ES has paid an attention to high standard quality during the designing and manufacturing of all products. Our highly qualified staff with long term experience provides accurate and reliable service and solutions to the customers.



ISO 9001: 2008 is an international standard re-lated to quality management system, applicabl-e to any organization from all types of business sectors and activities. ISO 9001:2008 is based on eight quality management principles (all fundamental to good business practice). When ful-ly adopted, these principles can help improve your organizational performance



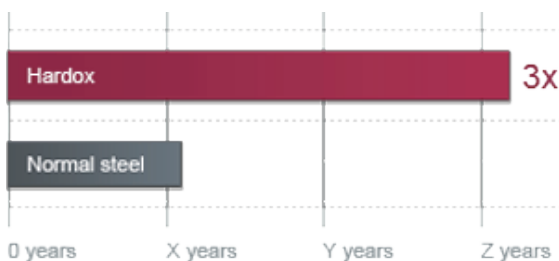
CE European Certification of the product that guarantees the compliance with the main requirements for safety, sale and use in the European Union.



Our products are basically made of Hardox, that is the best raw material used to work also in extreme conditions.

HARDOX STEEL is universally recognized as the best steel due to high abrasion resistance and excellent mechanical features. Hardox provides a unique combination of hardness and toughness. This opens for smarter, lighter struct-ures with extreme performance and extended service life.

## A LIFETIME OF SAVINGS



Extreme wear resistance is also a strategic business factor. When you extend the service life of your equipment two, five or even ten or more times, you can watch your productivity and your savings grow.

# PRIMARY CRUSHERS

Two powerful cylinders provides wide jaw opening, tremendous initial crushing force, and optimized angle of attack. Its symmetric design and independent cylinder movement minimize the stress to the carrier.



HARDOX WEAR PLATE

## LARGE-BORE CYLINDER

-the twin large diameter cylinders with speed valve provides exceptional cutting and crushing force.

## HIGH QUALITY MATERIAL

-built with high quality steel for maximum strength and abrasion resistance.

## REPLACEABLE CUTTING BLADES

-are fast and easy to change in the field.

## 360° HYDRAULIC ROTATION

-provides fast and precise positioning of the jaws.

## SPEED VALVE

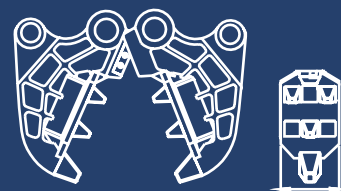
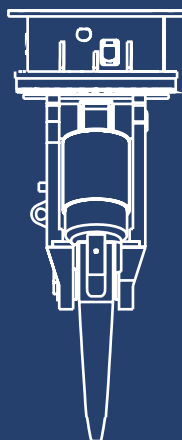
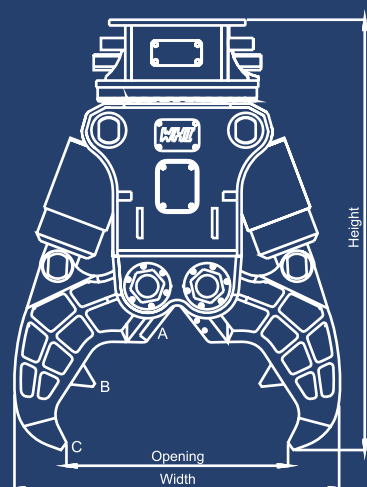
-improves cycle time by up to 30% compared to standard hydraulic system.

## SPACIALLY TREATED PIN & T-BUSH DESIGN



# PRIMARY CRUSHERS

World ES's TC concrete crushers are designed for the demolition of heavy concrete structures containing reinforcement steel.



Pulverizer Jaw  
(Optional for TC20-TC30)

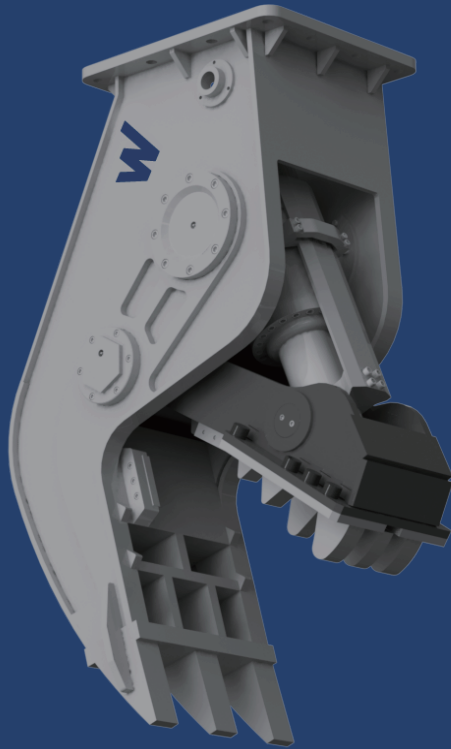
## SPECIFICATIONS

Model		Unit	TC10V	TC15V	TC20V	TC25V	TC30V	TC45V	TC60V
Carrier Weight		ton	7 - 12	12 - 18	18 - 22	22 - 28	28 - 40	40-50	48-65
Weight		kg	680	1,330	1,730	2,120	3,100	5,600	6,400
Overall Height		mm	1370	2,030	2,100	2,280	2,450	3,000	3,100
Overall Width			985	1,250	1,280	1,450	1,720	2,350	2,400
Jaw Opening			620	850	900	1000	1120	1400	1600
Jaw Depth			580	610	780	820	945	1100	1280
Blade Length			100	140	190	220	250	250	300
Cutting Force at Blade		ton	389	526	1116	1286	1729	2558	3018
Crushing Force at Tip		ton	71	82	115	143	180	266	312
Max. Oil Pressure		bar	300	320	320	320	320	320	320
Oil Flow Rate		lpm	70-120	110-180	180-220	200-250	250-300	320-450	320-500
Jaw open / close		sec	1.3/1.5	1.8/1.7	2.1/2.3	2.5/2.3	3.2/3.8	4.3/3.7	4.8/3.8
Hyd.Rotation	Pressure	bar	170	210	210	210	210	210	210
	Oil flow	lpm	28-32	28-32	30-38	32-45	32-45	75-105	75-105

Specifications are subject to change without notice



# SECONDARY PULVERIZERS



## HIGH QUALITY MATERIAL

-built with high quality steel for maximum strength and abrasion resistance.

## SPEED VALVE

-improves cycle time by up to 30% compared to standard hydraulic system.

## EXCHANGEABLE TOOTH PLATE

-eliminates the need to build up and hardface and are fast and easy to change in the field.



## LARGE-BORE CYLINDER

-the single large diameter cylinder with speed valve provides exceptional cutting and crushing force.



SPEED VALVE

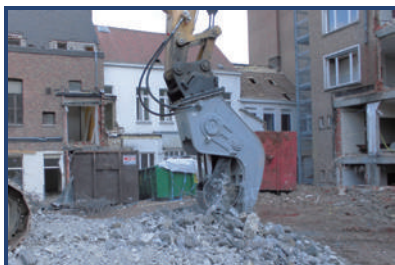


HARDOX WEAR PLATE

## SPECIFICATIONS

Model	Unit	TP05V	TP10V	TP15V	TP20V	TP25V	TP30V	TP45V
Carrier Weight	ton	2 - 5	7 - 12	10 - 18	17 - 22	20 - 25	24 - 35	35 - 50
Operating Weight	kg	250	600	1,100	1,600	2,150	2,600	3,800
Height	mm	1,020	1,380	1,650	1,830	1,960	2,450	2,600
Width		260	355	436	520	540	600	830
Jaw Opening		440	700	790	850	935	1,100	1,300
Jaw Depth	mm	395	680	820	825	870	1,050	1,150
Blade Length	mm	75	102	140	150	200	200	250
Cutting Force at Blade	ton	37	87	163	222	258	293	354
Crushing Force at Tip	ton	11	21	42	54	62	92	117
Max. Oil Pressure	bar	220	270	300	320	320	320	320
Oil Flow Rate	lpm	30-75	80-120	100-180	180-220	210-240	220-320	280-450
Jaw Open / Close	sec.	1.3/1.3	2.0/2.6	2.5/2.0	2.2/2.5	2.7/2.3	2.9/2.7	3.0/3.1

Specifications are subject to change without notice



# ROTATING PULVERIZERS



HYD. ROTATION



SPEED VALVE



HARDOX WEAR PLATE

## HIGH QUALITY MATERIAL

-built with high quality steel for maximum strength and abrasion resistance.

## SPEED VALVE

-improves cycle time by up to 30% compared to standard hydraulic system.

## EXCHANGEABLE TOOTH PLATE

-eliminates the need to build up and hardface and are fast and easy to change in the field.



## LARGE-BORE CYLINDER

-the single large diameter cylinder with speed valve provides exceptional cutting and crushing force.

## 360° HYDRAULIC ROTATION

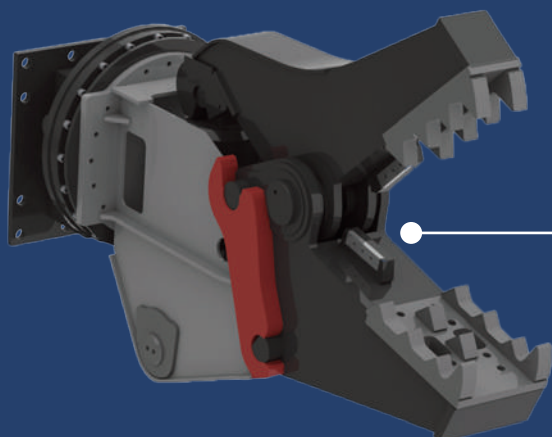
-provides fast and precise positioning of the jaws.

## SPECIFICATIONS

Model		Unit	TP15RV	TP20RV	TP25RV	TP30RV
Carrier Weight		ton	10 - 18	18 - 26	23 - 30	29 - 35
Operating Weight		kg	1,200	1,950	2,250	2,800
Height		mm	1850	2090	2478	2850
Width			480	520	540	600
Jaw Opening			790	920	935	1100
Jaw Depth			820	865	870	900
Blade Length			140	150	200	200
Cutting Force at Blade		ton	163	186	202	257
Crushing Force at Tip		ton	42	54	62	92
Max. Oil Pressure		bar	300	320	320	320
Oil Flow Rate		lpm	100-180	180-220	210-240	240-280
Jaw open / close		sec	2.4/2.4	2.6/2.8	2.7/2.9	2.7/3.0
Hyd. Rotation	Pressure	bar	180	210	210	210
	Oil Flow	lpm	28-32	30-38	32-45	32-45

Specifications are subject to change without notice

# MULTI PROCESSORS



HYD.ROTATION



SPEED VALVE



HARDOX WEAR PLATE



QUICK CHANGE



**CRUSHER JAW**



**PULVERIZER JAW**



**SHEAR JAW**

## QUICK JAW CHANGE

MP's quick jaw change system takes only few minutes to change jaws thanks to simple two rotating pin design allowing the operator to demolish, process and sort material, all with the one attachment. This will eliminate the downtime associated with changing implements or the added cost of using more than one machine on the job.

## SPECIFICATIONS

Multi Processor		Unit	MP20	MP30
Carrier Weight		ton	18 - 25	25 - 35
Weight of body frame		kg	1,150	1,450
Oil pressure		bar	320	320
Oil flow		l/min	180	220
Hyd.Rotation	Oil Pressure	bar	130	140
	Oil flow	l/min	40	40
Open/Close		sec	2.1/1.9	2.5/2.2

Crusher Jaw		Unit	MP20	MP30
Weight		kg	1,950	2,450
Crusher Jaw Weight		kg	750	960
Jaw opening		mm	720	820
Length of cutters		mm	190	240
Closing force	Tip	ton	76	105
	Middle	ton	105	150
	Throat	ton	250	380

Pulverizer Jaw		Unit	MP20	MP30
Weight		kg	1,970	2,470
Pulverizer Jaw Weight		kg	780	980
Jaw opening		mm	705	880
Length of cutters		mm	150	190
Closing force	Tip	ton	70	100
	Middle	ton	120	170
	Throat	ton	290	380

Shear Jaw		Unit	MP20	MP30
Weight		kg	1,900	2,380
Shear Jaw Weight		kg	744	930
Jaw opening		mm	390	480
Closing force	Tip	ton	100	135
	Middle	ton	170	235
	Throat	ton	380	550

Specifications are subject to change without notice

# MINI CRUSHERS



## HIGH QUALITY MATERIAL

-built with high quality steel for maximum strength and abrasion resistance.

## SPEED VALVE

-improves cycle time by up to 30% compared to standard hydraulic system.

## LARGE-BORE CYLINDER

-the single large diameter cylinder with speed valve provides exceptional cutting and crushing force.

## SPECIALLY TREATED PIN & T-BUSH DESIGN



SPEED VALVE



HARDOX WEAR PLATE

## SPECIFICATIONS

Model		Unit	TC01V	TC03V	TC05V	TC05RV
Carrier Weight		ton	1.0 - 2.0	2.0 - 3.0	4.0 - 7.0	4.0 - 7.0
Operating Weight		kg	180	280	360	410
Overall Height		mm	870	940	1000	1150
Overall Width		mm	660	730	770	770
Jaw Opening		mm	300	385	420	420
Jaw Depth		mm	287	345	370	370
Cutting Force at Blade		ton	148	188	220	220
Crushing Force at Tip		ton	20	40	50	50
Max. Oil Pressure		bar	210	250	250	250
Oil Flow Rate		lpm	45	60	75	75
Jaw Open / Close		sec.	1.4/1.1	2.0/1.3	1.8/1.0	1.8/1.0
Hyd. Rotation	Pressure	bar	Free Rotation			120
	Oil flow	lpm				13

Specifications are subject to change without notice



# SCRAP SHEARS



HARDOX WEAR PLATE

## WIDE JAW OPENING AND MAXIMUM CUTTING FORCE

-provides cutting efficiency and higher productivity.

## BLADE GAP ADJUSTMENT

-unique cutting blade gap adjustment system by shimming allows the smallest blade gap and it will cut thin steel plates.

## SPEED VALVE

-improves cycle time by up to 30% compared to standard hydraulic system.

## HIGH QUALITY MATERIAL

-built with high quality steel for maximum strength and abrasion resistance.

## 360° HYDRAULIC ROTATION

-provides fast and precise positioning of the jaws.

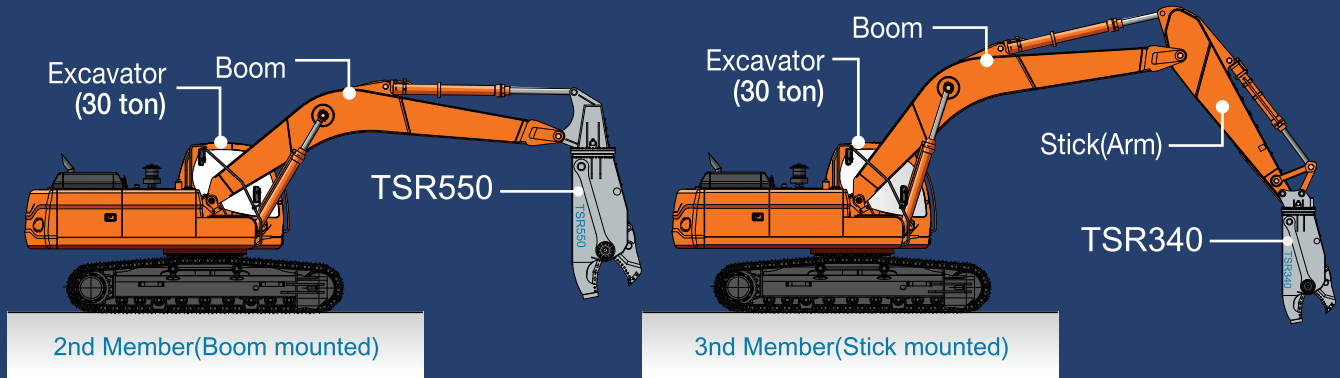
## MULTI-SPLIT BLADES

- maximize cutting forces and productivity. Multi-split blades are in a line for higher shearing performance.



# SCRAP SHEARS

Scrap Shears are the perfect tools for scrap recycling and demolition. The scrap shears with increased cutting force and cutting capacity create more profits in the field of scarp metal processing such as I-beams, H-beams, pipes, steel plates, ship demolition, etc.



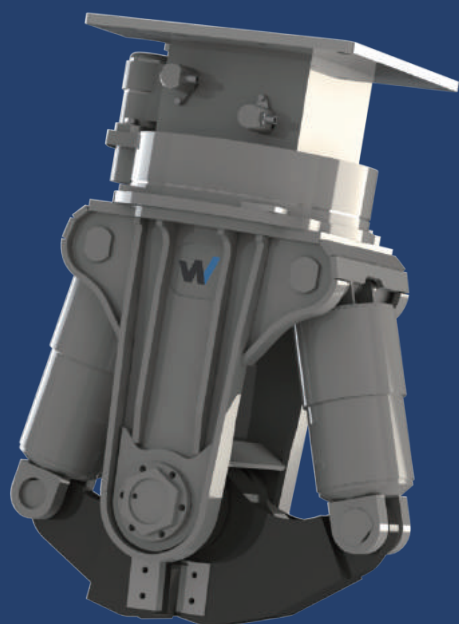
## SPECIFICATIONS

Model		Unit	TSR70	TSR160	TSR230	TSR340	TSR550	TSR750
Carrier Weight	2nd member	ton	-	-	12 - 18	19 - 26	27 - 50	36 - 60
Carrier Weight	3rd member	ton	5 - 10	12 - 18	19 - 26	27 - 40	50 - 70	65 - 100
Operating Weight		kg	540	1400	2100	3400	5000	7500
Jaw Opening		mm	285	420	520	610	720	820
Jaw Depth		mm	310	425	545	670	705	815
Oil Pressure		bar	280	350	350	350	350	350
Oil Flow		lpm	90	150	200	250	380	450
Hyd.Rotation	Oil Pressure	bar	130	150	150	150	150	150
	Oil Flow	lpm	15	30	40	40	55	55
Cutting Force	at Tip	ton	33	67	80	140	175	267
	at Throat	ton	107	271	308	640	666	1205

Specifications are subject to change without notice

Shear Jaw Appetite Guide	Unit	TSR70	TSR160	TSR230	TSR340	TSR550	TSR750
I-Beam (H x W)	mm	125 x 75	250 x 150	300 x 150	450 x 150	600 x 200	600 x 300
H-Beam (H x W)	mm	100 x 100	200 x 150	200 x 200	300 x 300	400 x 400	400 x 408
Pipe (Φ x T)	mm	150 x 4	280 x 6	350 x 6	450 x 8	560 x 10	600 x 14
Round Bar (Φ)	mm	40	55	70	85	110	120
Plate(T)	mm	9	14	19	23	30	40

# RAIL CUTTERS



**DESIGNED TO CUT UP TO UIC60 RAIL**

## **SPECIAL DESIGN FOR RAIL CUTTING**

-TRC Rail Cutters are specially designed for the railway demolition and scrap preparation with the optimal work efficiency.

## **LARGE-BORE CYLINDER**

-the single large diameter cylinder with speed valve provides exceptional cutting and crushing force.

## **360° HYDRAULIC ROTATION**

-provides fast and precise positioning of the jaws.



HYD.ROTATION



SPEED VALVE



HARDOX WEAR PLATE

## **SPECIFICATIONS**

Model	Carrier	Unit	Oil	Oil	Cutting	Hyd.Rotation		Cycle time	
	Weight	Weight	Pressure	Flow	Force	Pressure	Flow	Open	Close
TRC1000	ton	kgs	bar	l/min	ton	bar	l/min	sec	sec
	18-30	2350	320	230-320	310	120	20-30	2.5	2.3

Specifications are subject to change without notice



# ORANGE PEEL GRABS



HYD. ROTATION



HARDOX WEAR PLATE

**Orange Peel Grabs is suitable for handling and collection of material such as metal scrap, solid waste, paper and car tyres.**

## 360° HYDRAULIC ROTATION

-provides fast and precise positioning of the jaws.

## HIGH QUALITY MATERIAL

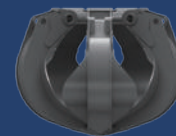
-built with high quality steel for maximum strength and abrasion resistance.



SMALL TINES



HALF CLOSE TINES



FULL CLOSE TINES

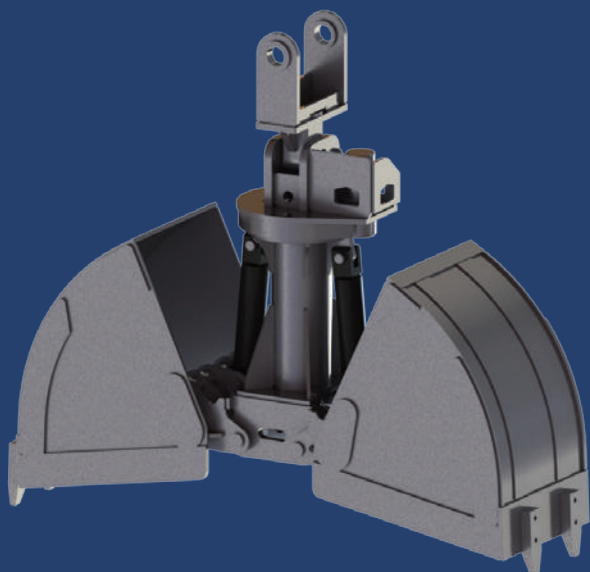
## SPECIFICATIONS

Model		Unit	TOG600	TOG800	TOG1000	TOG1200	TOG1500	TOG2000
Carrier Weight		ton	12-18	19-26	27-38	32-36	37-42	43-50
Operating Weight		kg	1,000	1,350	1,550	1,650	2,100	2,700
Volume		m <sup>3</sup>	0.6	1	1	1	2	2
Max. Oil Pressure		bar	320	320	320	320	320	320
Rated Oil Flow		l/min	130	150	200	200	220	250
Hyd. Rotation	Pressure	bar	150	150	150	150	150	150
	Oil Flow	l/min	30	30	30	30	30	40
Max. Opening		mm	1,600	1,800	2,000	2,160	2,360	2,540
Height		mm	1,700	1,840	1,940	2,000	2,280	2,490

Specifications are subject to change without notice



# CLAMSHELL BUCKETS



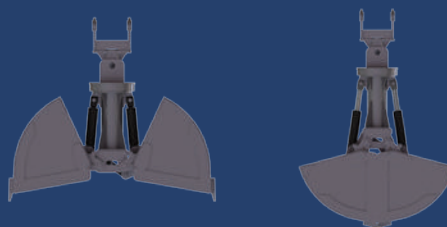
**Clamshell Buckets are designed for the movement of earth sand, gravel, mud, cereals, coal, industrial and agricultural waste, minerals, etc.**

## 360° HYDRAULIC ROTATION

-provides fast and precise positioning of the jaws.

## HIGH QUALITY MATERIAL

-built with high quality steel for maximum strength and abrasion resistance.



## SPECIFICATIONS

Model		Unit	TCB600	TCB800	TCB1000	TCB1500
Carrier Weight		ton	12-18	19-26	27-36	34-40
Operating Weight		kg	900	1100	1500	2200
Volume		m3	0.6	0.8	1	1.5
Max. Oil Pressure		bar	280	280	280	280
Rated Oil Flow		l/min	130	150	200	220
Hyd. Rotation	Pressure	bar	150	150	150	150
	Oil Flow	l/min	30	30	30	30
Max. Opening		mm	1,990	2,000	2,165	2,450
Height		mm	1,859	2,450	2,575	2,833

Specifications are subject to change without notice



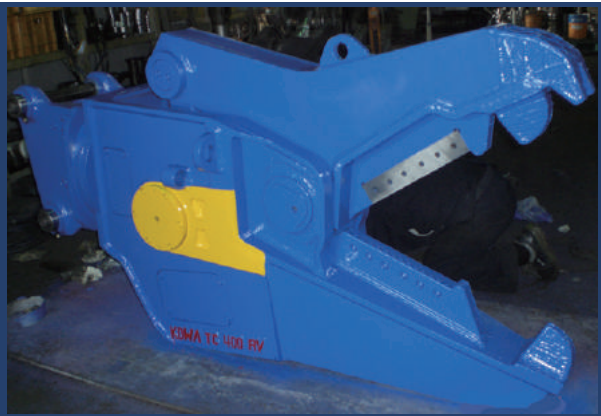
## OTHER PRODUCTS



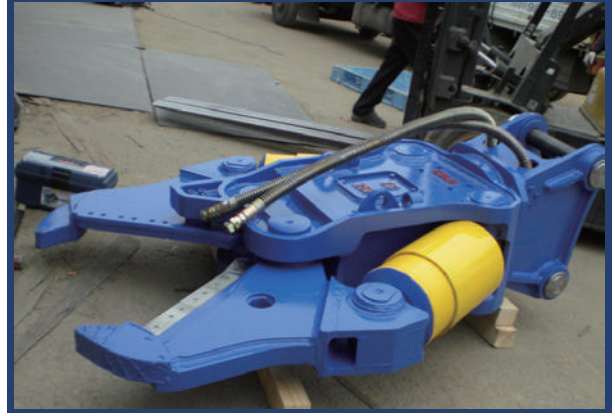
PRIMARY CRUSHER - 22ton, 30 ton class



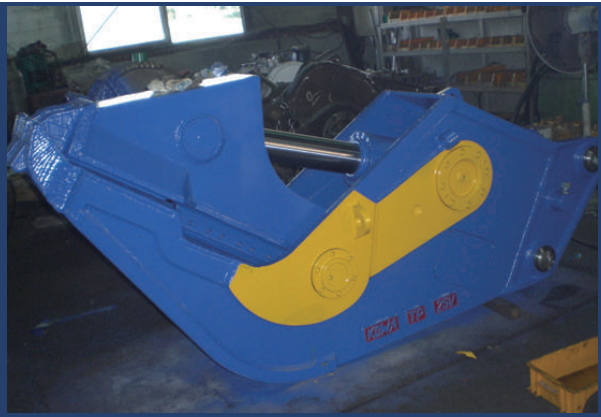
PRIMARY CRUSHER - 45 TON CLASS



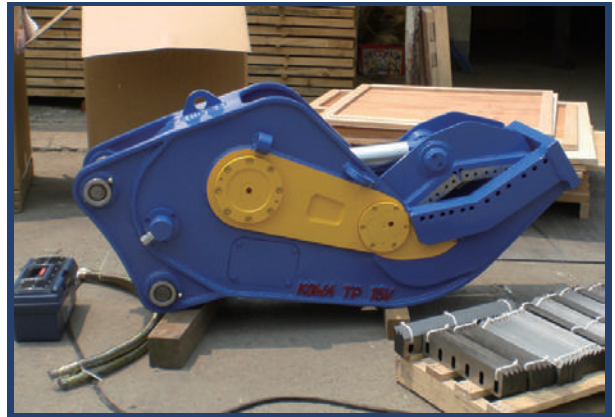
MULTI CUTTER - One Cylinder



MULTI CUTTER - Two Cylinder



SECONDARY CRUSHER



RECYCLING CUTTER



MAGNET PULVERIZER



X CUTTER - to cut H & I beam



---

Factory & Office : #68-1, 68-3 Dongeulsan-ri, Tongjin-eup,  
Gimpo-si, Gyeonggi-do, Korea 415-864

Phone : +82-505-373-5630

Fax : +82-505-373-5631

E-Mail : [sales@worldes.co.kr](mailto:sales@worldes.co.kr)

Website : [www.worldes.co.kr](http://www.worldes.co.kr)

Contact